

3233

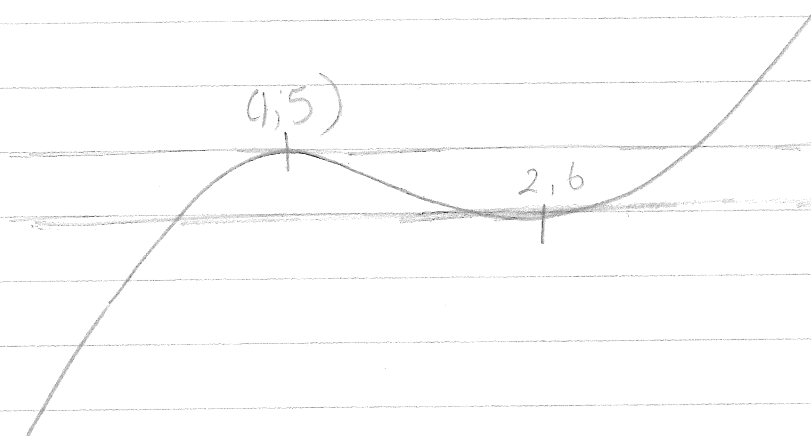
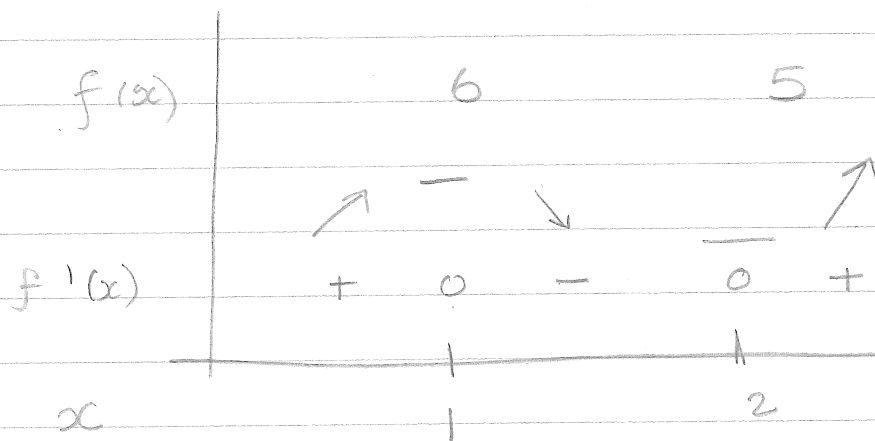
$$f(x) = 2x^3 - 9x^2 + 12x + 1$$

$$f'(x) = 6x^2 - 18x + 12$$

$$\begin{aligned} 0 &= 6x^2 - 18x + 12 \\ &= 6(x^2 - 3x + 2) \\ &= 6(x-2)(x-1) \end{aligned}$$

$$0 \neq 6$$

$$x=1, \quad x=2$$



$$a < 5 \quad 1 \text{ röt}$$

$$a = 5 \quad 2 \text{ rötter}$$

$$5 < a < 6 \quad 3 \text{ rötter}$$

$$a = 6 \quad 2 \text{ rötter}$$

$$a > 6 \quad 1 \text{ röt}$$